

Multi-DVR Manager

The current version of the Multi-DVR Manager allows the user to log in to multiple client sites simultaneously. The interface is primarily a viewing tool with limited control over DVR server settings. The Multi-DVR Manager cannot be resized nor can its position on the screen be adjusted. Later versions should correct this problem.

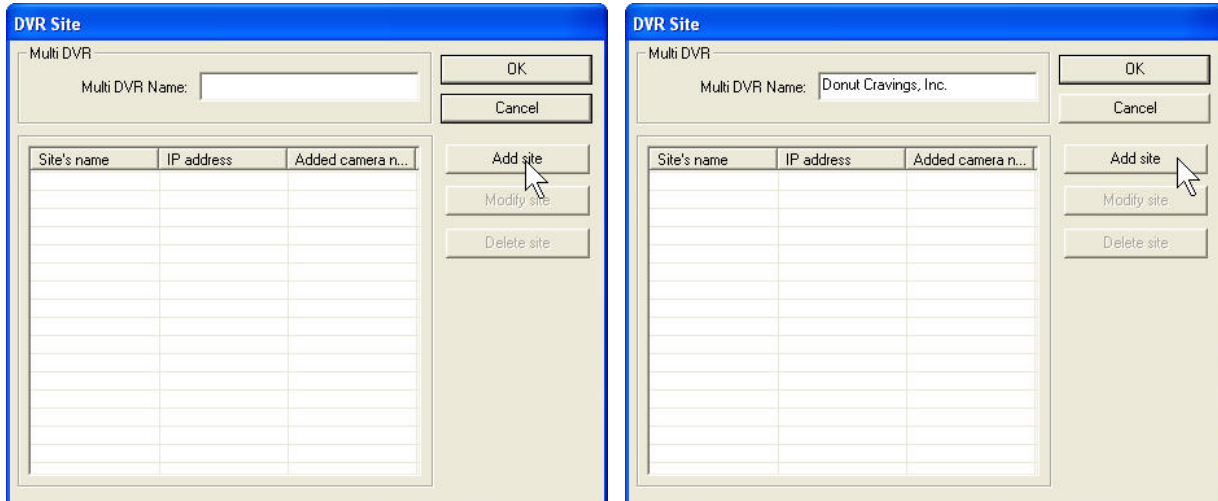
After installation of the Multi-DVR Manager, starting the application will display the following screen.



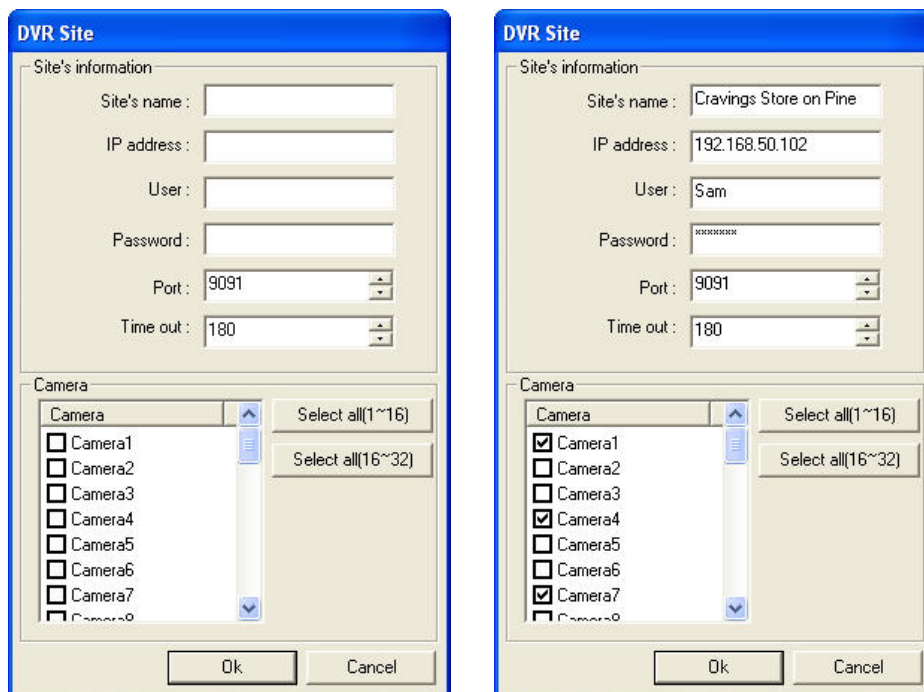
The user begins configuring the application by creating log in information for the sites to be viewed within the tool. Controls for Setup and login are located on the lower right corner of the screen.



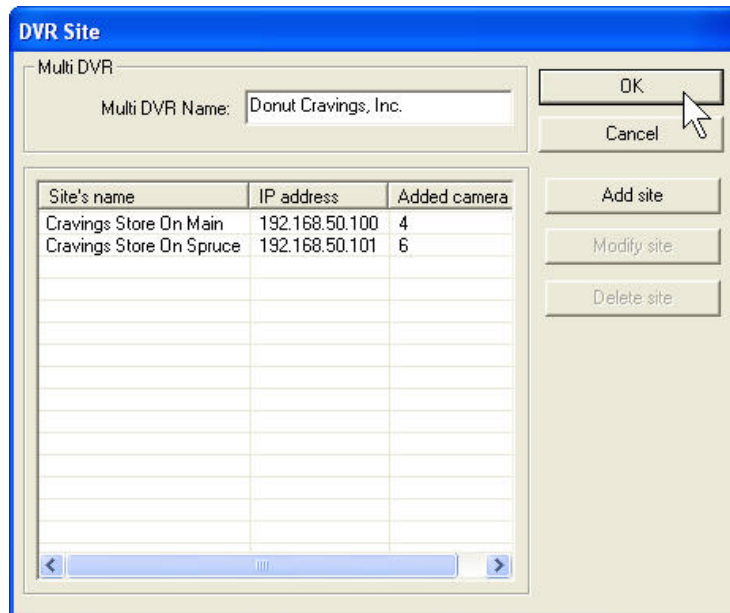
The primary control for viewing remote sites is the icon on the left, the Add Site Control. Activating this icon will display a window that allows you to add multiple groups containing multiple sites. The first step will be to create a group name for all of the sites in a specific group. This is done by entering a group name into the Multi DVR Name field and clicking on Add Site.



Once the Add Site button has been activated a window will be displayed that allows the user to enter the specifics of the individual site. The user must enter a descriptive name for the site, the IP address, and the User name and Password. If the Port on the DVR has been changed from the standard of 9091 then the correct port number must be specified. The camera or cameras to be viewed must be checked in the list. This is the number of cameras for *only this specific site*. Each site in the group must be configured in this manner until all sites have been added to the group.

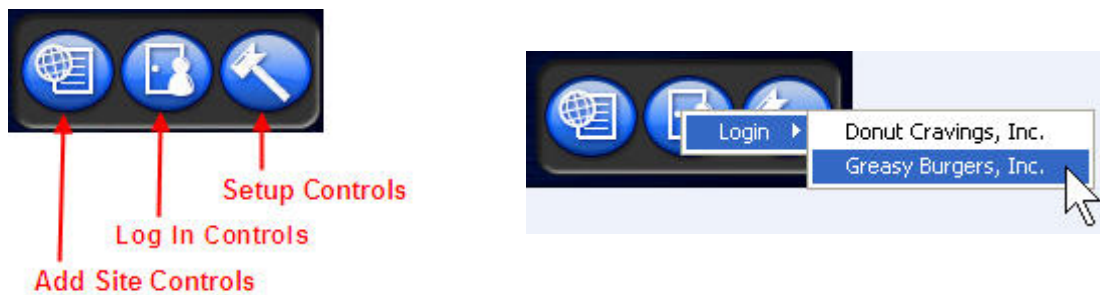


After adding all sites to the group, click on the OK button.



Multiple groups can also be created in the same manner. The user can log into multiple groups but only one group can be displayed at a time. Logging into a group will automatically connect the user to all sites specified in that group.

The user will log into a group by selecting the second icon at the bottom of the screen, the Log In Control.

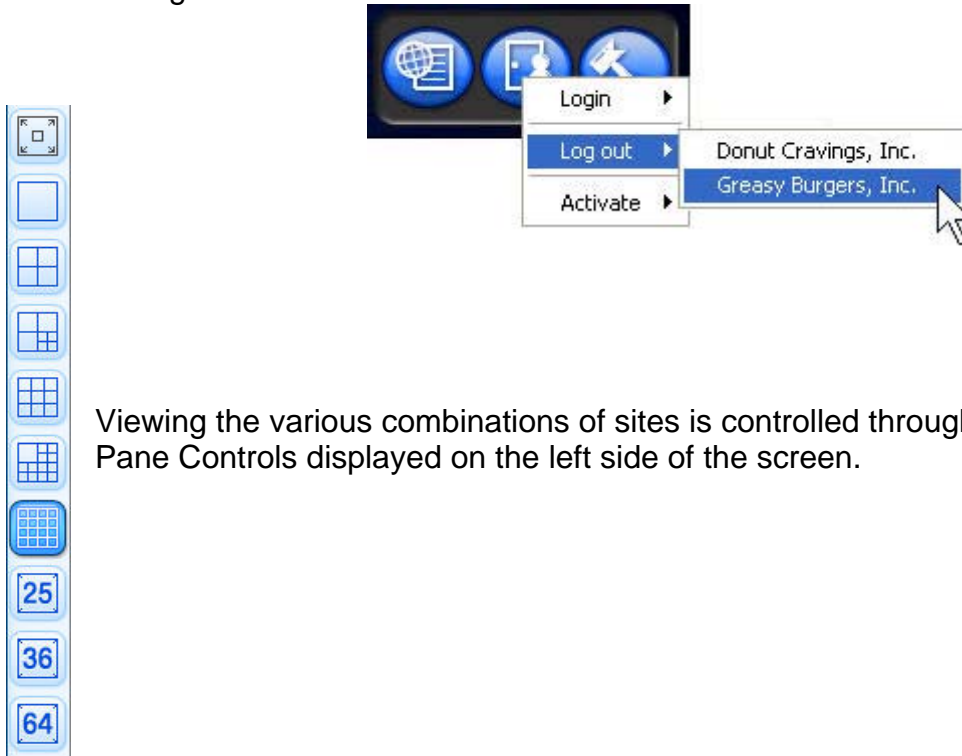


Selecting the group in the list will automatically log the user in to all of the sites in that group. Multiple groups can be logged into simultaneously but only one group of sites can be viewed at a time. If the user has logged into multiple groups, switching between groups is accomplished by selecting the entry in the Activate list.



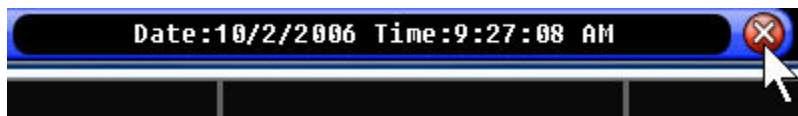
A maximum of 64 cameras can be viewed at any time. For example, if there are 4 sites with 16 cameras at each site then all 4 sites could be listed in one group and all could be viewed simultaneously. If there were more than 4 sites with the maximum of 16 cameras then multiple groups would need to be created and the user would use the Activate button to select between the multiple groups. If sites were smaller, say 4 cameras per site, then a total of 16 sites could be viewed simultaneously as one group.

The user can log out of one or more groups by simply selecting the group or groups from the Logout list.



Viewing the various combinations of sites is controlled through the use of the Pane Controls displayed on the left side of the screen.

When the user has logged out of all groups the application can be closed by clicking on the red X at the top of the screen.



The user can also minimize the application by choosing Minimize rather than Close.

